

Holyrood Park Radical Road update April 2025

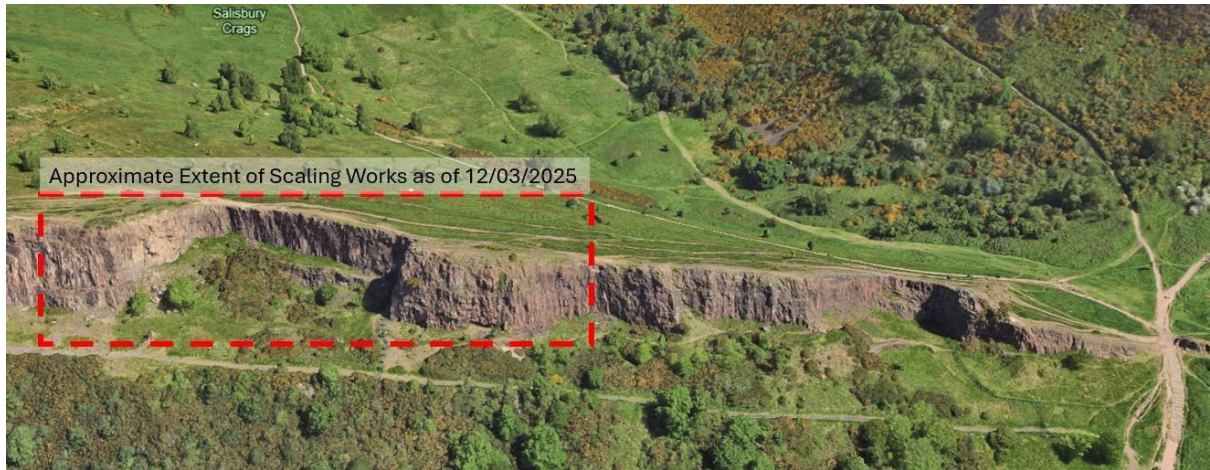
As part of our commitment to improve access to the Radical Road, please find an update on the recent and ongoing works.



We are currently progressing with works which will improve public access to Hutton's Section and Hutton's Rock, found at the southern area of the road and commonly referred to as the South Quarry.

Scaling works got started ahead of schedule in March and our site team has been removing a large volume of loose material from the rock face. Due to the amount of material that needs to be cleared, this process is taking some time. However, we are pleased to be making steady progress.

The images below showcase the section of the Radical Road that we are currently scaling as part of these works, as well as some of the loose material that has been removed.



Map data © 05/28/2023 Google



In addition to the scaling works, our dedicated teams have also been working hard to carry out essential activities to improve access to the Radical Road.

One of the critical tasks completed was a comprehensive habitat survey, which enabled us to identify significant habitats and species within the area. As many of you know, Holyrood Park is a sanctuary for a diverse range of plant and animal life. From birds and invertebrates to insects like moths and butterflies, as well as bats, the Park is teeming with biodiversity. This survey was vital to ensure that our work has minimal environmental impact.

Furthermore, we have designed and will be installing appropriate signage on the reopened sections of the Radical Road. These signs will inform visitors about rockfall risks, ensuring their safety while enjoying the Park.

Our unmanned aerial vehicle (UAV) team were also on site last week to rescan the rock face which will provide an updated 3D scan of the Craggs at the south-west end of the Radical Road. By comparing this new scan with previous images, we can assess changes to the rock face.

Additional works ongoing in Holyrood Park:

Following our annual inspections on Samsons Ribs, a risk of rock fall was identified and, as a result, Duddingston Low Road was closed to all users, including pedestrians, as a precaution until further notice.

Our specialist geo-technical engineers are currently undertaking further analysis which will inform next steps and we will provide further updates as soon as we have them.

Due to the high public use of Duddingston Low Road by vehicles, pedestrians and cyclists, we may need to divert resources to support any related works. However, our work to improve access to the Radical Road will continue.

While we cannot confirm the exact timescales for the completion of these works, we are committed to providing regular updates as the works progress.

Historic Environment Scotland