

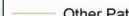



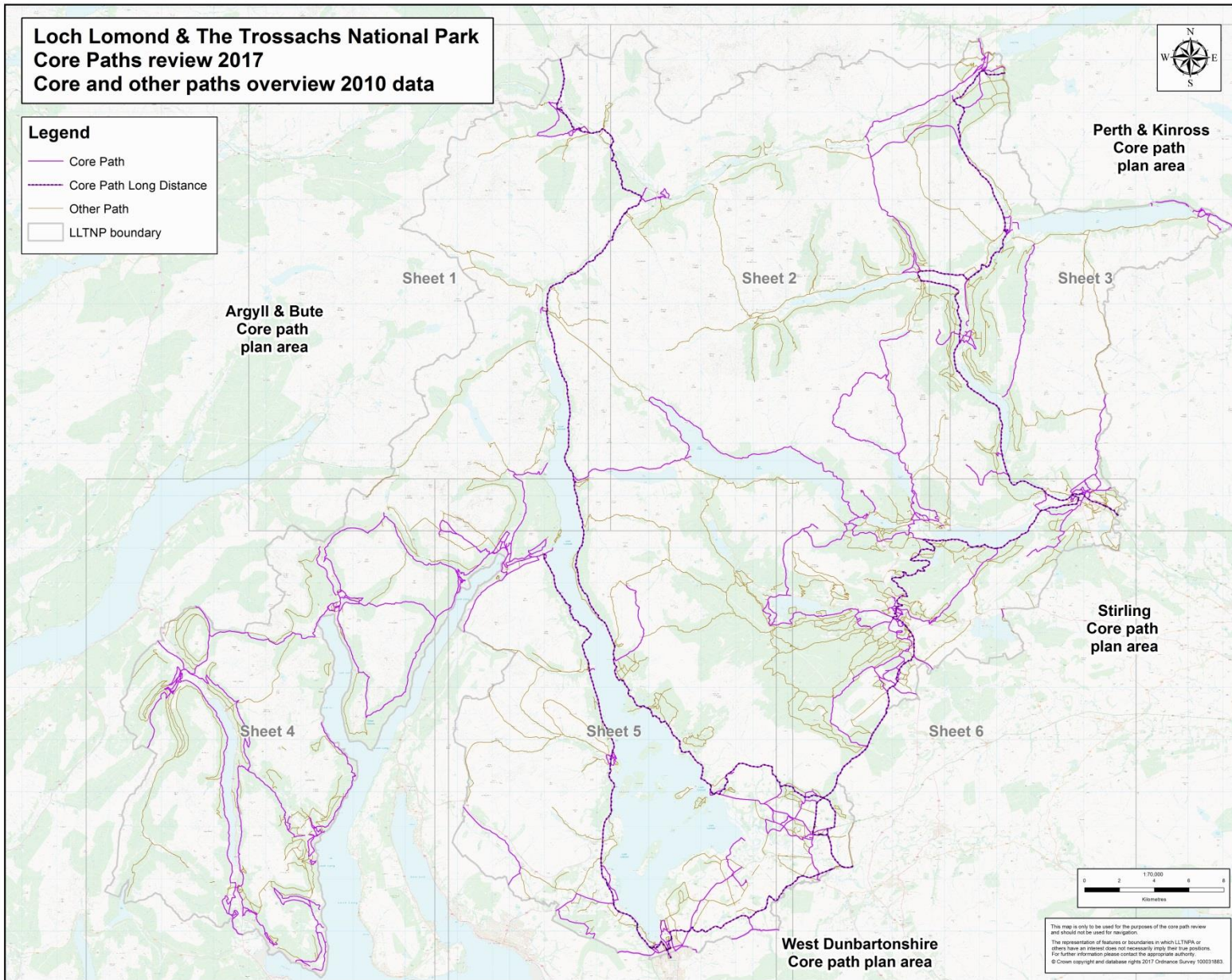
1	Identified by the community as a priority
2	Provides for or has potential for a specific recreational use, as a primary use.
3	Provides or has potential to offer enjoyment of the Parks special qualities
4	Promoted for visitors and tourism linked activity with the potential for economic linked benefits.
5	Provides useable links with the public transport network
6	Provides a functional route/link
7	Provides a link (or part of a link), between settlements including cross boundary
8	Provides a short route option close to or within settlements or visitor hubs/destinations
9	Forms a key link (or part of) to a wider network of paths/routes or strategic longer distance routes
10	Balances landowners interests with exercising access rights

**Loch Lomond & The Trossachs National Park
Core Paths review 2017
Core and other paths overview 2010 data**



Legend

-  Core Path
-  Core Path Long Distance
-  Other Path
-  LLTNP boundary



This map is only to be used for the purposes of the core path review and should not be used for navigation.
The representation of features or boundaries in which LLTNPAs or others have an interest does not necessarily imply their use or position.
For further information please contact the appropriate authority.
© Crown copyright and database rights 2017 Ordnance Survey 100031883