

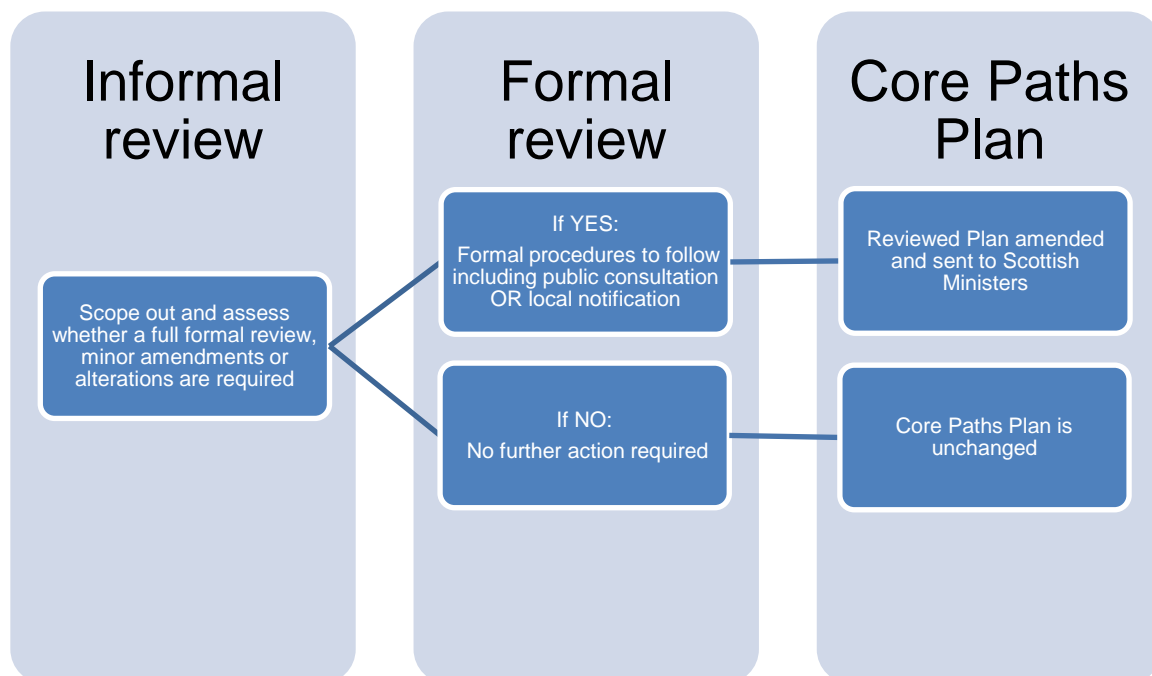
Core Paths Plan Review Process

The following paper gives an introduction to the core paths plan review process. Its purpose is to provide clarity on the process and answer any questions from members on how it may be progressed in the National Park.

The Park Authority adopted its Core Paths Plan in June 2010 and we are starting to prepare for a review of the Plan, as required in section 20 of the Land Reform (Scotland) Act 2003. The purpose of the review is to ensure that the plan continues to recognise the essential “core paths” that provide sufficient access throughout the National Park area.

Recent amendments have been made to the Land Reform (Scotland) Act 2003 to clarify the process for reviewing core paths plans and new associated guidance is expected from Scottish Government in due course.

The process to follow can be summarised as:

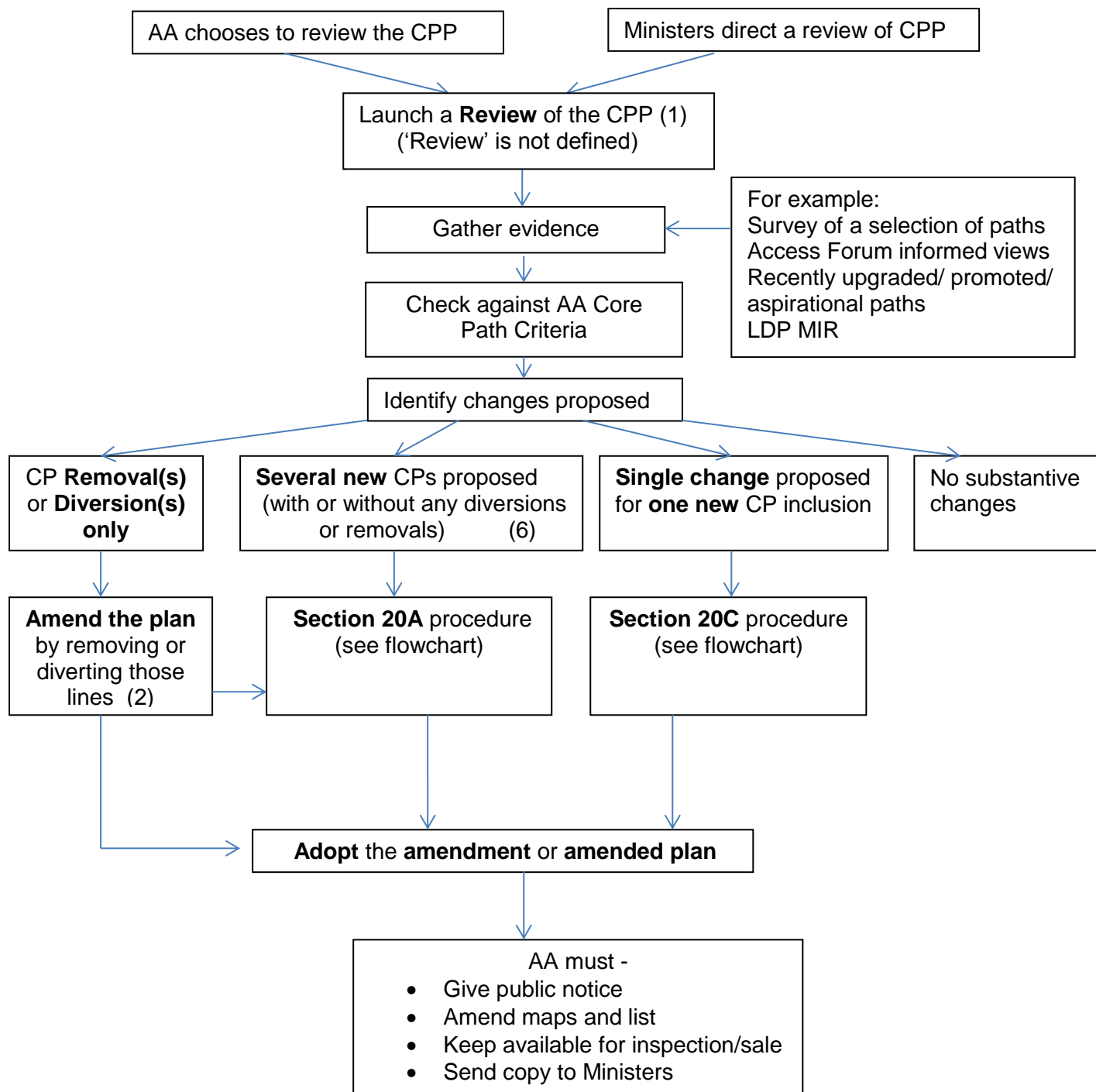


The following three procedural flow charts have been developed by SNH and other Access Authorities showing in more detail the processes required subject to the type and extent of changes required.

If only a minor change such as the removal of one core path is required then a different process is required, to that of a full plan review with wider public consultation. These are all covered in the various parts of section 20 (A – D) of the Act.

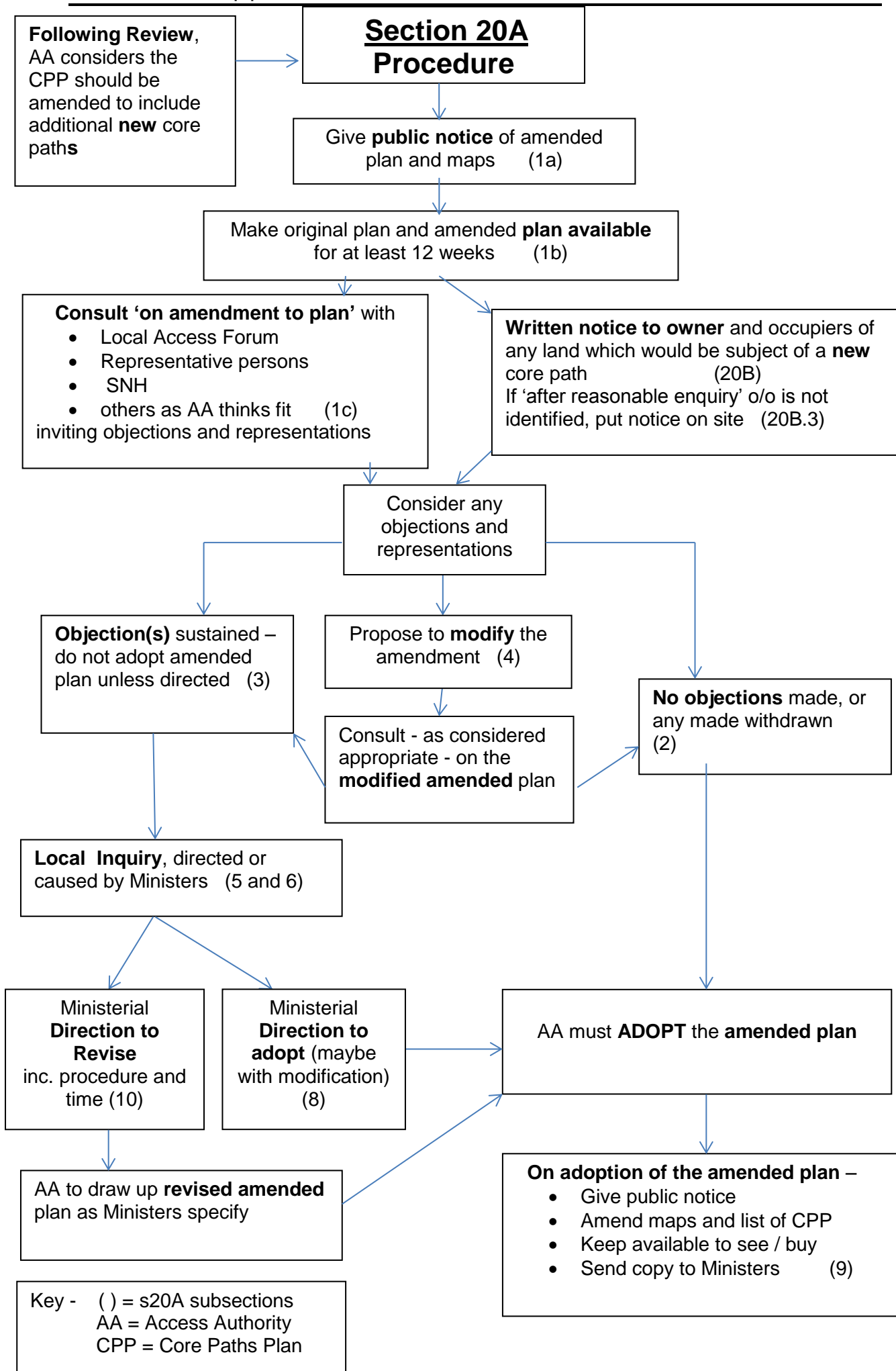
The Local Access Forum will play a key role in the review process, and the Park Authority will bring a proposed approach for consideration by members at a future meeting. It is anticipated that an initial role for the Forum will be in helping with the assessment of the current plan prior to undertaking any full formal review.

Core Paths Plan Review Overview:



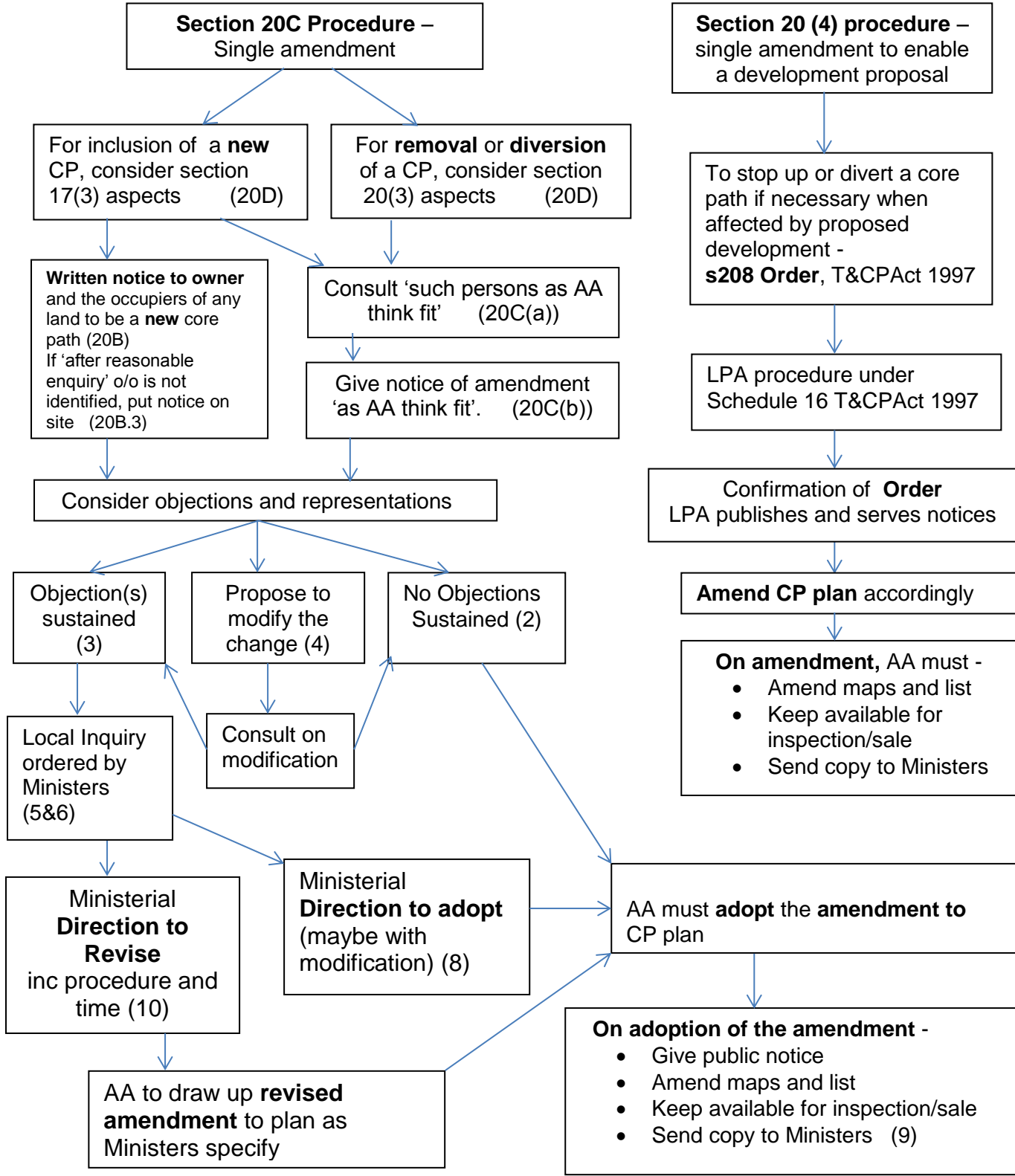
Key -
 () = Section 20 subsections, LRSA
 AA = Access Authority
 LDP MIR = Local Development Plan
 Main Issues Report

Core Paths Plan review paper



Key - () = s20A subsections
 AA = Access Authority
 CPP = Core Paths Plan

**Single amendment to a Core Paths Plan :
 (No Full Review required)**



Key -
 () = Section 20A subsections, LRSA
 AA = Access Authority
 LPA = Local Planning Authority
 CP = Core Path
 T&CP = Town & Country Planning